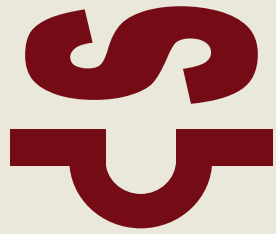


**S/M FLECKVIEH CATTLE
COWHERD DATA**
Photos, Pedigree,
Production & EPDs
December 2020



Here you will find data for the S/M Fleckvieh cowherd that will calve in 2021, grouped by Cow Families. Every female in a cow

family descends from the same elite foundation female. In our experience the breed's most prepotent females consistently pass on their ability generation to generation. It is these females that we have built our herd around.

Data is provided so that you can know the production of each dam. Progeny weaning weights (WW) are adjusted to 205 days and the in-herd ratio is noted. EPDs as of December 2020 are shown. We update this resource each year as new data is available and females come and go from our herd. For more complete data on the 2020 calf crop, please see the report available from our home page, "2020 Calves."

We hope this this is helpful for you.

Jeff Sorenson

S/M FLECKVIEH CATTLE

Jeff Sorenson

Garretson, South Dakota

sorenson@augie.edu

605-359-8728

www.smfleckvieh.com

**100 COW FAMILY
DORA LEE FRANCHESCA**



Dora Lee Franchesca



IPU 4G Franchesca 113M



S/M FRANCHESCA Z121

BD: 3-15-12 BW: 79 WW: 595 91
ASA: 2,648,838 Nondilutor Polled

Grinalta's Superb DP106R
Grinalta's HP Ultra FF94
Grinalta's Pol Morene

S/M Franchesca Z121

PRL Houston 005H

S/M Franchesca S161

Dora Lee Franchesca

Progeny:

<u>BD</u>	<u>Sex</u>	<u>Tattoo</u>	<u>H/P</u>	<u>WW</u>	<u>Sire</u>
2-28-14	H	B141	P	665 105	Legend
4-09-15	B	C121	P	769 100	K Impact
3-11-16	B	D121	P	798 107	S Arthur
3-15-17	H	E176	H	621 97	K Impact
3-17-18	B	F121	H	823 107	D Harry
3-13-19	H	G195	H	596 92	S/M Epic
4-04-20	H	H101	P	714 106	S Arthur

CE	WW	YW	MCE	MW	API	TI
5	63	91	2	70	105	64



S/M FRANCHESCA Z122

BD: 4-10-12 BW: 91 WW: 634 98
 ASA: 2,648,839 Nondilutor Horned

FGAF Boss 26N
 FFS Xtra Stout 20X
 Shawacres Sheilia 20S

S/M Franchesca Z122

Spruceburn Prestige 113P

S/M Franchesca W191

IPU 4G Franchesca 113M

Progeny:

BD	Sex	Tattoo	H/P	WW	Sire
2-28-14	H	B142	H	706 112	Legend
3-05-15	H	C152	H	690 103	K Impact
3-15-16	B	D122	H	822 110	Legend
4-07-17	H	E172	H	692 121	S Arthur
3-11-18	H	F182	P	682 101	S/M Diesel
4-11-20	H	G196	H	642 99	S/M Diesel
3-12-20	H	H103	H	661 98	S/M Diesel

CE	WW	YW	MCE	MW	API	TI
1	66	95	1	75	86	60



S/M FRANCHESCA B141

BD: 2-28-14 BW: 86 WW: 665 105
 ASA: 2,868,040 Nondilutor Polled

Anchor T Metro 4E
 Anchor T Legend 7H
 Anchor T Helga 10Y

S/M Franchesca B141

Grinalta's HP Ultra FF94

S/M Franchesca Z121

S/M Franchesca S161

Progeny:

BD	Sex	Tattoo	H/P	WW	Sire
3-17-16	B	D141	P	832 112	IPU Radium
3-27-17	B	E141	P	791 103	S Arthur
3-07-18	B	F141	H	796 103	D Harry
3-11-19	H	G191	P	646 99	S/M Epic
4-01-20	B	H141	P	828 110	S Arthur

CE	WW	YW	MCE	MW	API	TI
14	75	106	10	82	137	78



S/M FRANCHESCA B142

BD: 2-28-14 BW: 98 WW: 706 112
 ASA: 2,868,048 Nondilutor Horned

Anchor T Metro 4E
 Anchor T Legend 7H
 Anchor T Helga 10Y

S/M Franchesca B142

FFS Xtra Stout 20X

S/M Franchesca Z122

S/M Franchesca W191

Progeny:

BD	Sex	Tattoo	H/P	WW	Sire
3-04-16	B	D142	P	777 104	Bank Roll
3-07-17	H	E173	H	514 90	K Impact
4-06-18	H	F184	P	656 97	S/M Diesel
3-20-19	H	G192	P	636 98	S/M Diesel
3-16-20	B	H142	P	741 98	Emperor

CE	WW	YW	MCE	MW	API	TI
8	78	108	6	78	114	72



S/M FRANCHESCA B143

BD: 03-20-14 BW: 105 WW: 677 107
 ASA: 2,868,056 Nondilutor Polled

Emsig
 Emperor
 351
 S/M Francesca B143
 Bar 5 SA Harrach 801P
 S/M Franchesca X101
 Dora Lee Franchesca

Progeny:

<u>BD</u>	<u>Sex</u>	<u>Tattoo</u>	<u>H/P</u>	<u>WW</u>	<u>Sire</u>
2-25-16	B	D143	H	841 113	Legend
3-20-17	H	E175	H	688 107	K Impact
3-19-18	H	F183	P	733 108	Bank Roll
3-03-19	H	G193	H	627 97	P Pharao
3-14-20	B	H143	P	801 106	P Pharao

CE	WW	YW	MCE	MW	API	TI
-4	83	114	-5	80	94	70



S/M FRANCHESCA C152

BD: 3-05-15 BW: 107 WW: 690 103
 ASA: 3,003,520 Nondilutor Horned

Anchor T Impact 2H
 Kuntz Impact 7Z
 Kuntz Miss Moses 03X
 S/M Franchesca C152
 FFS Xtra Stout 20X
 S/M Franchesca Z122
 S/M Franchesca W191

Progeny:

<u>BD</u>	<u>Sex</u>	<u>Tattoo</u>	<u>H/P</u>	<u>WW</u>	<u>Sire</u>
3-20-17	B	E152	H	753 98	IPU Radium
4-05-18	H	F181	H	698 103	S Arthur
3-12-19	H	F197	H	629 97	S/M Epic
3-11-20	B	H152	P	835 111	Emperor

CE	WW	YW	MCE	MW	API	TI
3	69	107	0	77	93	64

S/M FRANCHESCA D161

BD: 3-18-16 BW: 95 WW: 628 96
 ASA: 3,139,566 Nondilutor Polled

Sibelle Dirty Harry 25Z
 PHS Bank Roll 345B
 PHS Yuma
 S/M Franchesca D161
 Bar 5 SA Harrach 801P
 S/M Franchesca W192
 Dora Lee Franchesca

Progeny:

<u>BD</u>	<u>Sex</u>	<u>Tattoo</u>	<u>H/P</u>	<u>WW</u>	<u>Sire</u>
2-27-18	B	F161	H	734 95	Legend
3-27-19	H	G194	P	670 103	S Arthur
3-12-20	B	H161	PP	776 103	Vazquex

CE	WW	YW	MCE	MW	API	TI
6	71	103	7	76	116	71



S/M FRANCHESCA E171

BD: 3-15-17 BW: 103 WW: 594 104
 ASA: 3,299,287 Nondilutor Polled

Sibelle Dirty Harry 25Z
 PHS Bank Roll 345B
 PHS Yuma

S/M Franchesca E171
 Spruceburn Prestige 113P
 S/M Franchesca W191
 IPU 4G Franchesca 113M

Progeny:

BD	Sex	Tattoo	H/P	WW	Sire
2-17-19	B	G171	P	802 105	Legend
4-07-20	B	H171	PP	805 107	S/M Diesel

CE	WW	YW	MCE	MW	API	TI
1	65	96	2	74	91	62



S/M FRANCHESCA F182

BD: 3-11-18 BW: 93 WW: 682 101
 ASA: 3,422,568 Nondilutor Polled

IPU Radium 20A
 S/M Diesel D141
 S/M Franchesca B141

S/M Franchesca F182
 FFS Xtra Stout 20X
 S/M Franchesca Z122
 S/M Franchesca W191

Progeny:

BD	Sex	Tattoo	H/P	WW	Sire
2-18-20	H	H102	P	631 94	Bank Roll

CE	WW	YW	MCE	MW	API	TI
6	67	94	5	72	101	66

S/M FRANCHESCA G191

BD: 3-11-19 BW: 87 WW: 646 99
 ASA: 3,589,4220 Nondilutor Polled

PHS Bank Roll 345B
 S/M Epic E581
 S/M Anna U581

S/M Franchesca G191
 Anchor T Legend 7H
 S/M Franchesca B141
 S/M Franchesca Z121

CE	WW	YW	MCE	MW	API	TI
9	71	103	7	77	126	74

S/M FRANCHESCA G192

BD: 3-20-19 BW: 99 WW: 636 98
 ASA: 3,589,395 Nondilutor Polled

PHS Bank Roll 345B
 S/M Epic E581
 S/M Anna U581

S/M Franchesca G192
 Anchor T Legend 7H
 S/M Franchesca B142
 S/M Franchesca Z122

CE	WW	YW	MCE	MW	API	TI
3	79	116	3	78	96	66

S/M FRANCHESCA G194

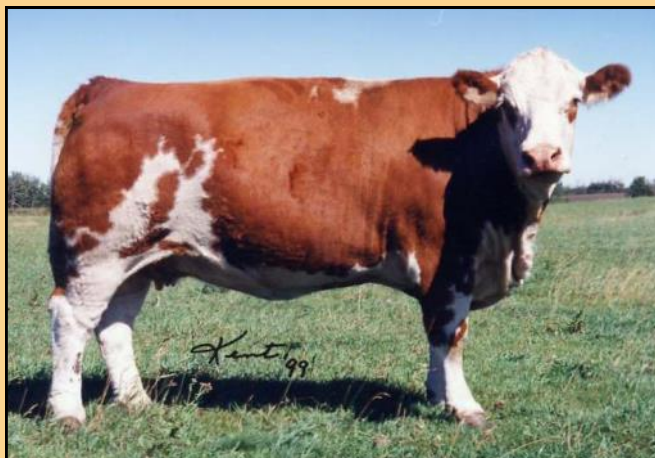
BD: 3-27-19 BW: 98 WW: 670 103
 ASA: 3,589,398 Nondilutor Polled

Virginia Walker 97W
 Sibelle Arthur 39B
 Sibelle India 25W

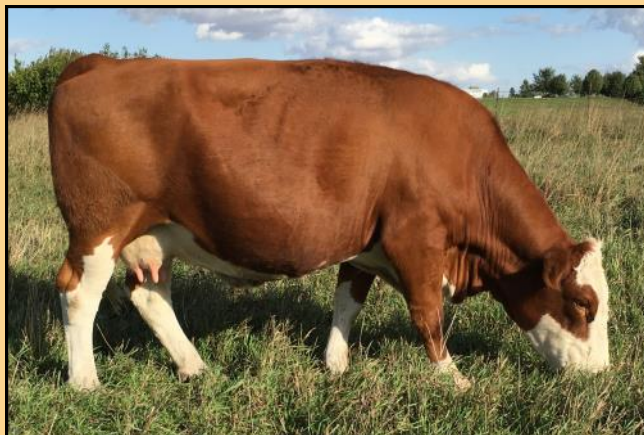
S/M Franchesca G194
 PHS Bank Roll 345B
 S/M Franchesca D161
 S/M Franchesca W192

CE	WW	YW	MCE	MW	API	TI
4	82	119	4	78	106	73

**200 COW FAMILY
EDC POLL MAGNUM 1B**



EDC Poll Magnum 1B



S/M JULIETTE X201

BD: 03-20-10 BW: 87 WW: 617 ET
ASA: 2,548,625 Nondilutor Polled

BEL Western Union 5Z
NAC Unions Legacy 29L
Ms DD&E Major Starter 44Y

S/M Juliette X201

Mutig
Grinaltas Polled Fleck
EDC Poll Magnum 1B

Progeny:

<u>BD</u>	<u>Sex</u>	<u>Tattoo</u>	<u>H/P</u>	<u>WW</u>	<u>Sire</u>
2-22-12	H	Z222	H	704 109	Legend
5-12-13	H	A232	P	510 86	Xtra Stout
4-11-15	H	C252	H	714 107	IPU Radium
4-25-16	H	D262	H	683 104	K Impact
3-27-17	H	E271	P	635 111	S Arthur
3-31-18	H	F281	PP	695 103	S/M Diesel
3-13-19	H	G291	P	626 96	S/M Epic
4-01-20	H	H201	P	707 105	S/M Diesel

CE	WW	YW	MCE	MW	API	TI
2	64	80	-2	78	85	61



S/M JOANNA E271

BD: 3-27-17 BW: 82 WW: 635 111
ASA: 3,299,299 Nondilutor Polled

Virginia Walker 97W
Sibelle Arthur 39B
Sibelle India 25W

S/M Joanna E271

NAC Unions Legacy 29L
S/M Juliette X201
Grinalta's Polled Fleck

Progeny:

<u>BD</u>	<u>Sex</u>	<u>Tattoo</u>	<u>H/P</u>	<u>WW</u>	<u>Sire</u>
2-22-19	H	G292	H	623 96	Legend
3-21-20	H	H202	H	618 92	S/M Diesel

CE	WW	YW	MCE	MW	API	TI
7	66	86	3	72	90	60

S/M SOPHIE D261

BD: 4-08-16 BW: 96 WW: 706 108
 ASA: 3,139,578 Nondilutor Polled

Virginia Walker 97W
 Sibelle Arthur 39B
 Sibelle India 25W

S/M Sophie D261

NAC Unions Legacy 29L
 Grinaltas Scarlet PFF14S
 Grinaltas Trendsetter

Progeny:

BD	Sex	Tattoo	H/P	WW	Sire
2-23-18	B	F261	H	776 101	Legend
4-07-19	B	G261	P	811 106	S/M Epic

CE	WW	YW	MCE	MW	API	TI
2	74	101	1	73	103	67

S/M SUZANNE F282

BD: 03-18-18 BW: 95 WW: 697 103
 ASA: 3,422,571 Nondilutor Polled

Virginia Walker 97W
 Sibelle Arthur 39B
 Sibelle India 25W

S/M Suzanne F282

NAC Unions Legacy 29L
 Grinaltas Scarlet PFF14S
 Grinaltas Trendsetter

Progeny:

BD	Sex	Tattoo	H/P	WW	Sire
2-20-20	B	H282	P	632 84	Bank Roll

CE	WW	YW	MCE	MW	API	TI
1	79	110	-1	70	86	64

S/M JENNETTE G291

BD: 3-13-19 BW: 88 WW: 685 106
 ASA: 3,589,399 Nondilutor Polled

PHS Bank Roll 345B
 S/M Epic E581
 S/M Anna U581

S/M Jennette G291

NAC Unions Legacy 29L
 S/M Juliette X201
 Grinalta's Polled Fleck

CE	WW	YW	MCE	MW	API	TI
3	67	85	1	76	94	64

S/M JADA F281

BD: 3-31-18 BW: 90 WW: 695 103
 ASA: 3,422,566 Nondilutor Homo Polled

IPU Radium 20A
 S/M Diesel D141
 S/M Franchesca B141

S/M Jada F281

NAC Unions Legacy 29L
 S/M Juliette X201
 Grinalta's Polled Fleck

CE	WW	YW	MCE	MW	API	TI
6	58	76	3	71	87	59



300 COW FAMILY PHS YUMA



PHS Yuma

PHS YUMA (17Y)

BD: 1-14-11 BW: 90 WW:
ASA: 2,928,087 Nondilutor Polled

Emperor
BLI Warlord 915W
Wyvern Rheola

PHS Yuma

R-Five Maltese
FGAF Precious Thing 402T
FGAF Shanti 121P

Progeny:

BD	Sex	Tattoo	H/P	WW	Sire
2-13-14	B	345B	P		Dirty Harry
1-24-15	H	C351	H	658 99	Pol Imprint
3-13-16	H	D361	P	647 99	Legend
4-08-17	B	E17	H	825 107	Arthur
3-28-18	H	F381	P	617 91	K Impact
3-29-19	B	G17	H	715 94	S Arthur
5-07-20	B	H17	H	dd	S/M Diesel

CE	WW	YW	MCE	MW	API	TI
4	73	105	3	74	111	69

S/M URSA D361

BD: 03-13-16 BW: 95 WW: 647 99
ASA: 3,139,557 Nondilutor Polled

Anchor T Metro 4E
Anchor T Legend 7H
Anchor T Helga 10Y

S/M Ursa D361

BLI Warlord 915W
PHS Yuma
FGAF Precious Thing 402T

Progeny:

BD	Sex	Tattoo	H/P	WW	Sire
3-13-18	H	F382	H	691 102	IPU Radium
3-21-19	B	G361	H	810 106	S Arthur
3-21-20	H	H302	H	752 112	S Arthur

CE	WW	YW	MCE	MW	API	TI
7	80	115	5	83	129	77



S/M YOYO F381

BD: 3-28-18 BW: 81 WW: 617 91
ASA: 3,422,550 Nondilutor Polled

Anchor T Impact 2H
Kuntz Impact 7Z
Kuntz Miss Moses 03X

S/M Yoyo F381

BLI Warlord 915W
PHS Yuma
FGAF Precious Thing 402T

Progeny:

BD	Sex	Tattoo	H/P	WW	Sire
2-24-20	H	H301	P	594 88	IPU Radium

CE	WW	YW	MCE	MW	API	TI
8	66	92	4	69	107	68

**400 COW FAMILY
ABR MISS ARNOLD H9003**



S/M CARISSA Y413

BD: 3-06-11 BW: 60 WW: 588 twin
ASA: 2,603,256 Dilutor Carrier Polled

Sir Arnold G809
Bar None Shareholder
Bar None Laika

S/M Carissa Y413

Sir Arnold L5865

S/M Cynda N431

S/M Cynthia C436

Progeny:

BD	Sex	Tattoo	H/P	WW	Sire
4-16-13	H	A436	H dd		Yahtzee
3-25-14	B	B413	P	823 110	Legend
3-11-15	H	C452	P	709 106	Legend
3-16-16	B	D413	P	841 113	Bank Roll
3-25-17	H	E472	P	716 112	K Impact
4-03-18	B	F413	P	876 114	K Impact
3-22-19	B	G413	P	798 105	S/M Epic
3-13-20	H	H403	P	701 104	Pharao

CE	WW	YW	MCE	MW	API	TI
3	79	112	6	82	98	68

S/M CAROL A431

BD: 3-25-13 BW: 93 WW: 635 107
ASA: 2,766,172 Dilutor Carrier Homo Polled

PRL Porterhouse Regent
S/M Yahtzee Y092
S/M Renna W092

S/M Carol A431

Bar None Shareholder

S/M Caroline Y414

S/M Cynda N431

Progeny:

BD	Sex	Tattoo	H/P	WW	Sire
3-04-15	B	C431	P	645 84	Legend
3-20-16	B	D431	P	746 100	S Arthur
3-25-17	H	E473	P	611 95	S Arthur
2-23-18	B/H	ET twins	doa		
4-07-19	H	G491	P	605 93	S/M Diesel
4-06-20	B	H431	P	737 98	S Arthur

CE	WW	YW	MCE	MW	API	TI
3	68	94	2	65	94	60

S/M Delilah C451

BD: 4-06-15 BW: 101 WW: 657 98
ASA: 3,003,504 Nondilutor Polled

Anchor T Impact 2H
Kuntz Impact 7Z
Kuntz Miss Moses 03X

S/M Delilah C451

S/M Romeo R113

S/M Dixie T471

S/M Diana P445

Progeny:

BD	Sex	Tattoo	H/P	WW	Sire
2-26-17	B	E451	P	761 99	IPU Radium
3-23-18	B	F451	H	741 96	S Arthur
5-18-19	H	G493	H	655 101	S Arthur
4-07-20	H	H404	H	622 93	S Arthur

CE	WW	YW	MCE	MW	API	TI
7	67	99	3	70	101	62



S/M LORISSA F481

BD: 5-03-18 BW: 90 WW: 683 101
 ASA: 3,422,578 Nondilutor Polled

Virginia Walker 97W
 Sibelle Arthur 39B
 Sibelle India 25W
 S/M Lorissa F481
 Anchor T Legend 7H
 S/M Lissa U481
 S/M Liesel J491

Progeny:

<u>BD</u>	<u>Sex</u>	<u>Tattoo</u>	<u>H/P</u>	<u>WW</u>	<u>Sire</u>
2-27-20	B	H481	P/S	705 94	Bank Roll

S/M Callista C452

BD: 3-11-15 BW: 92 WW: 709 106
 ASA: 3,003,521 Nondilutor Polled

Anchor T Metro 4E
 Anchor T Legend 7H
 Anchor T Helga 10Y
 S/M Callista C452
 Bar None Shareholder
 S/M Carissa Y413
 S/M Cynda N431

Progeny:

<u>BD</u>	<u>Sex</u>	<u>Tattoo</u>	<u>H/P</u>	<u>WW</u>	<u>Sire</u>
4-18-17	B	E452	H	795 103	IPU Radium
3-28-18	B	F452	P	727 94	K Impact
3-28-19	H	G492	P	678 114	S Arthur
3-09-20	H	H402	P	645 96	A Foresight

CE	WW	YW	MCE	MW	API	TI
6	75	101	7	77	113	70

S/M HERMINE D462

BD: 3-11-16 BW: 101 WW: 689 105
 ASA: 3,139,568 Nondilutor Homo Polled

Sibelle Dirty Harry 25Z
 PHS Bank Roll 345B
 PHS Yuma
 S/M Hermine D462
 Virginias RedMarciano FF
 S/M Hermione U482
 S/M Hanna S462

Progeny:

<u>BD</u>	<u>Sex</u>	<u>Tattoo</u>	<u>H/P</u>	<u>WW</u>	<u>Sire</u>
2-27-18	B	F462	P	760 99	Legend
3-21-19	B	G462	P	726 96	S Arthur
3-06-20	H	H401	P	696 104	Western

CE	WW	YW	MCE	MW	API	TI
3	83	123	2	80	104	68

CE	WW	YW	MCE	MW	API	TI
2	75	100	-1	70	107	69

S/M CYNTHIA G492

BD: 3-28-19 BW: 105 WW: 742 114
 ASA: 3,589,410 Nondilutor Polled

Virginia Walker 97W
 Sibelle Arthur 39B
 Sibelle India 25W
 S/M Cynthia G492
 Anchor T Legend 7H
 S/M Callista C452
 S/M Carissa Y413

CE	WW	YW	MCE	MW	API	TI
5	87	123	5	80	113	75

**500 COW FAMILY
ABR MISS ARNOLD J9018**



S/M KARINNA W591

BD: 03-17-09 BW: 93 WW: 564 93
ASA: 2,501,305 Nondilutor Polled

Emsig
Emperor
351

S/M Karinna W591

Anchor T Metro 4E
Miss Arnold L5950
Miss Arnold A5225

Progeny:

BD	Sex	Tattoo	H/P	WW	Sire
4-01-11	H	Y512	H	638 101	S/M Romeo
4-10-12	H	Z523	H	649 100	Xtra Stout
3-10-13	H	A533	H	649 110	Xtra Stout
3-17-14	H	B541	PP	649 103	S/M Stout
3-23-15	B	C591	H	789 103	GG Moses
3-16-16	B	D591	H	717 96	S Arthur
3-19-17	H	E571	P	545 85	Bank Roll
3-16-18	B	F591	H	726 94	X9008
3-20-19	H	G591	PP	685 106	S/M Epic
3-16-20	B	H591	P	684 91	Vazquex

S/M KARINNE B541

BD: 3-17-14 BW: 91 WW: 649 103
ASA: 2,868,031 Nondilutor Homo Polled

FFS Xtra Stout 20X
S/M Stout Z543
S/M Katherine P543

S/M Karinne B541

Emperor
S/M Karinna W591
Miss Arnold L5950

Progeny:

BD	Sex	Tattoo	H/P	WW	Sire
3-04-16	H	D561	P	615 94	Legend
3-19-17	H	E572	P	662 103	S Arthur
3-17-18	B	F113B	H	737 nc	ET calf
4-16-19	B	G541	P	556 86	S Arthur
3-18-20	B	H541	P	814 108	S Arthur

S/M Addie C551

BD: 3-15-15 BW: 90 WW: 658 99
ASA: 3,003,532 Dilutor Carrier Polled

Emsig
Emperor
351

S/M Addie C551

Virginias RedMarciano FF
S/M Anna U581
Miss Arnold H5822

Progeny:

BD	Sex	Tattoo	H/P	WW	Sire
3-21-17	H	E573	H dd		IPU Radium
4-23-18	B	F551	P	851 110	IPU Radium
3-17-19	B	G551	P	783 103	S/M Epic
3-15-20	H	H502	P	693 103	Vazquex

CE	WW	YW	MCE	MW	API	TI
4	75	110	1	77	101	67

CE	WW	YW	MCE	MW	API	TI
1	76	105	-3	73	105	69

CE	WW	YW	MCE	MW	API	TI
3	70	98	-3	68	105	66



S/M KARINE D561

BD: 3-04-16 BW: 67 WW: 615 94
 ASA: 3,139,576 Nondilutor Polled

Crossroad Radium 789U

IPU Radium 20A

IPU Ms. Laredo 107Y

S/M Karine D561

S/M Stout Z543

S/M Karinne B541

S/M Karinna W591

Progeny:

<u>BD</u>	<u>Sex</u>	<u>Tattoo</u>	<u>H/P</u>	<u>WW</u>	<u>Sire</u>
2-23-18	H	F581	PP	704 104	Bank Roll
3-29-19	H	G594	H	703 108	S Arthur
3-08-20	B	H561	H	878 117	S Arthur

CE	WW	YW	MCE	MW	API	TI
6	71	93	5	79	92	62



S/M KATHERINE E571

BD: 3-19-17 BW: 90 WW: 545 85
 ASA: 3,299,286 Nondilutor Polled

Sibelle Dirty Harry 25Z

PHS Bank Roll 345B

PHS Yuma

S/M Katherine E571

Emperor

S/M Karinna W591

Miss Arnold L5950

Progeny:

<u>BD</u>	<u>Sex</u>	<u>Tattoo</u>	<u>H/P</u>	<u>WW</u>	<u>Sire</u>
2-25-19	B	G571	H	715 94	G809
3-20-20	H	H503	P	647 96	S Arthur

CE	WW	YW	MCE	MW	API	TI
4	69	102	-1	71	106	65



S/M KARI ANNE E572

BD: 3-19-17 BW: 79 WW: 662 103
 ASA: 3,299,304 Nondilutor Polled

Virginia Walker 97W

Sibelle Arthur 37W

Sibelle India 25W

S/M Kari Anne E572

S/M Stout Z543

S/M Karinne B541

S/M Karinna W591

Progeny:

<u>BD</u>	<u>Sex</u>	<u>Tattoo</u>	<u>H/P</u>	<u>WW</u>	<u>Sire</u>
2-26-19	H	G593	H	622 96	G809
3-04-20	B	H572	H	721 96	S/M Diesel

CE	WW	YW	MCE	MW	API	TI
8	70	97	4	71	122	70

S/M KAROLINE F581

BD: 2-23-18 BW: 89 WW: 704 104
 ASA: 3,422,552 Nondilutor Homo Polled

Sibelle Dirty Harry 25Z
 PHS Bank Roll 345B
 PHS Yuma

S/M Karoline F581

IPU Radium 20A
 S/M Karine D561
 S/M Karinne B541

Progeny:

BD	Sex	Tattoo	H/P	WW	Sire
2-19-20	H	H501	P	705 105	Pharao

CE	WW	YW	MCE	MW	API	TI
1	77	108	2	82	94	66

S/M KARI G591

BD: 3-20-19 BW: 88 WW: 685 106
 ASA: 3,589,422 Nondilutor HomoPolled

PHS Bank Roll 345B
 S/M Epic E581
 S/M Anna U581

S/M Kari G591

Emperor
 S/M Karinna W591
 Miss Arnold L5950

CE	WW	YW	MCE	MW	API	TI
2	78	121	-1	75	108	71

S/M KAITLYN G592

BD: 3-14-19 BW: 85 WW: 693 107
 ASA: 3,589,389 Nondilutor Polled

Sibelle Dirty Harry 25Z
 PHS Bank Roll 345B
 PHS Yuma

S/M Kaitlyn G592

MFI Money Talker 4033
 S/M Kathleen A532
 S/M Katherine P543

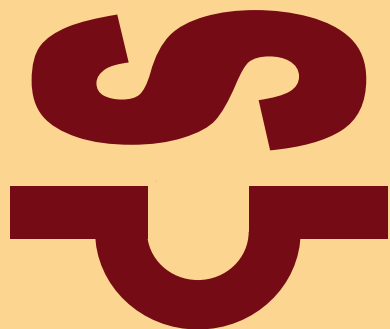
CE	WW	YW	MCE	MW	API	TI
6	75	106	2	79	116	68



**600 COW FAMILY
MFL ZAILA 8Z**



MFL Zaila 8Z



JNR PETRA II (JNR 535C)

BD: 1-02-15 BW: 97 WW: 758 ET
ASA: 3,320,860 Nondilutor Horned

Shawacres Jahari 50L

MFI BamBam

MFI Lolita 3107

JNR Petra II

MFL Haxan Reward 9R

MFI Petra 1019

MFL Zaila 8Z

Progeny:

<u>BD</u>	<u>Sex</u>	<u>Tattoo</u>	<u>H/P</u>	<u>WW</u>	<u>Sire</u>
3-15-18	H	F681	H	669 99	C Radium
3-12-19	H	G91	H	644 99	Bank Roll
3-26-20	H	H601	P	654 97	S/M Diesel

CE	WW	YW	MCE	MW	API	TI
-2	79	118	-5	70	89	65



S/M ZAILA F681

BD: 3-10-18 BW: 101 WW: 669 99
ASA: 3,422,565 Nondilutor Horned

MF Mr. Evan 14P

Crossroad Radium 789U

Crossroads Pandita 308P

S/M Zaila F681

MFI Bambam

JNR Petra II

MFI Petra 1019

Progeny:

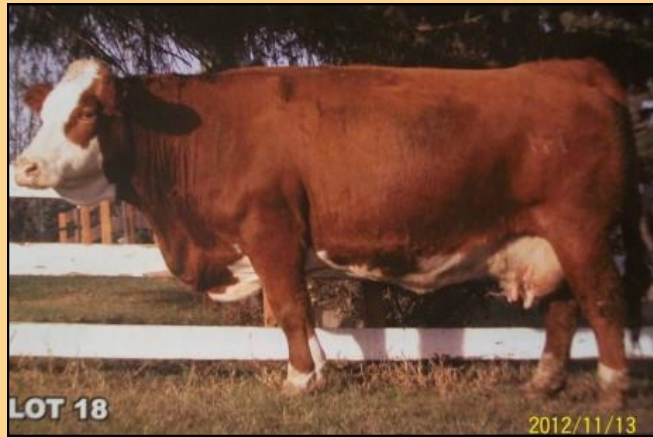
<u>BD</u>	<u>Sex</u>	<u>Tattoo</u>	<u>H/P</u>	<u>WW</u>	<u>Sire</u>
2-21-20	B	H681	P	700 93	Pharao

CE	WW	YW	MCE	MW	API	TI
2	76	104	-2	74	90	65

**700 COW FAMILY
ANCHOR T HELGA 10Y**



Anchor T Helga 10Y



Anchor T Sefi 10L



Anchor T Krystall 47G



BIG SKY KRYSTALL (MMVI 68Z)

BD: 2-10-12 BW: 100 WW:
ASA: 3,320,861 Dilutor Carrier Horned

MFI Whistler 47L
Gibbons Jeremiah
RHY Evie 62C
Big Sky Krystall
Klondike Gold Rush 418B
Anchor T Krystall 47G
Anchor T Helga 10Y

Progeny:

BD	Sex	Tattoo	H/P	WW	Sire
4-16-19	B	G68	H	882 116	S Arthur
4-26-20	B	H68	P	810 108	S/M Diesel

CE	WW	YW	MCE	MW	API	TI
3	72	108	1	90	90	63



S/M HELGA E771

BD: 3-14-17 BW: 94 WW: 730 114
ASA: 3,299,311 Nondilutor Horned

Virginia Walker 97W
Sibelle Dirty Harry 25Z
Sibelle Golda
S/M Helga E771
MFI Whistler 47L
Ole Sef1 480X
Anchor T Sefi 10L

Progeny:

BD	Sex	Tattoo	H/P	WW	Sire
3-06-19	B	G771	H	737 97	P Pharao
3-15-20	H	H701	P	664 99	S/M Diesel

CE	WW	YW	MCE	MW	API	TI
5	86	122	3	82	100	73

800 COW FAMILY KFFC Candy Yakima

KFFC CANDY YAKIMA (C515)

BD: 2-13-15 BW: 100 WW: 717 120
ASA: 3,016,709 Nondilutor Horned

Flec Levi Niner
KFFC Yakima Levi
KFFC Margo Elwood
KFFC Candy Yakima
KFFC Spiro Levi
KFFC Ula Spiro
KFFC Sedona Pack

Progeny:

BD	Sex	Tattoo	H/P	WW	Sire
1-10-17	H	E733	H	535 104	C Argonne
1-04-18	B	F824	H	613 106	Z Argonne
1-31-19	H	G930	H	692 100	Z Argonne
1-27-20	H	H46	H		Delhi Hafke

CE	WW	YW	MCE	MW	API	TI
5	64	73	3	68	96	65

KFFC ENGRID CADE (E733)

BD: 1-10-17 BW: 81 WW: 535 104
ASA: 3,332,099 Nondilutor Horned

KFFC Zohaz Argonne
KFFC Cade Argonne
KFFC AJA X-66
KFFC Engrid Cade
KFFC Yakima Levi
KFFC Candy Yakima
KFFC Ula Spiro

Progeny:

BD	Sex	Tattoo	H/P	WW	Sire
1-29-19	H	G972	H	726 105	Dallas Load
2-01-20	H	H36	H		D ZO Niner

CE	WW	YW	MCE	MW	API	TI
9	64	76	5	72	107	67

000 COW FAMILY SLS MAZDA 49M



SLS Mazda 49M



S/M RACHEL D061

BD: 2-25-16 BW: 79 WW: 651 99
ASA: 3,139,571 Nondilutor Polled

Anchor T Metro 4E
Anchor T Legend 7H
Anchor T Helga 10Y
S/M Rachel D061
Kuntz Impact 7Z
S/M Rena B041
S/M Renna W092

Progeny:

BD	Sex	Tattoo	H/P	WW	Sire
2-22-18	H	F181	PP	626 93	Bank Roll
3-22-19	B	G061	P	774 101	S Arthur
3-28-20	H	H002	H	683 102	S Arthur

CE	WW	YW	MCE	MW	API	TI
9	63	86	6	73	116	67



S/M ROSE ANN F081

BD: 2-22-18 BW: 72 WW: 626 93
 ASA: 3,422,554 Nondilutor Homo Polled

Sibelle Dirty Harry 25Z
 PHS Bank Roll 345B
 PHS Yuma

S/M Rose Ann F081

Anchor T Legend 7H

S/M Rachel D061

S/M Rena B041

Progeny:

BD	Sex	Tattoo	H/P	WW	Sire
2-20-20	B	H081	PP	734 97	S/M Diesel

S/M ROTE E071

BD: 3-07-17 BW: 70 WW: 549 96
 ASA: 3,299,315 Nondilutor Polled

Sibelle Dirty Harry 25Z
 PHS Bank Roll 345B
 PHS Yuma

S/M Rebecca T071

Klondike Firecracker 420J

SLS Mazda 49M

Sleepy Hollow 27K

Progeny:

BD	Sex	Tattoo	H/P	WW	Sire
2-23-19	H	G091	H	643 99	Legend
3-08-20	H	H001	P	695 104	S Arthur

CE	WW	YW	MCE	MW	API	TI
12	60	88	10	72	123	67

S/M RITA E072

BD: 3-17-16 BW: 89 WW: 665 104
 ASA: 3,299,300 Nondilutor Polled

Virginia Walker 97W

Sibelle Arthur 39B

Sibelle India 25W

S/M Rita E072

Kuntz Impact 7X

S/M Rena B041

S/M Renna W092

Progeny:

BD	Sex	Tattoo	H/P	WW	Sire
4-02-19	B	G072	H	785 103	IPU Radium
3-11-20	B	H072	H	730 97	S/M Diesel

CE	WW	YW	MCE	MW	API	TI
6	72	99	4	73	104	70

CE	WW	YW	MCE	MW	API	TI
7	67	99	5	76	111	67

